

IntraLink™ Web-Enabled HMI

Cost-Effective Graphical Web-Enabled HMI Package

The Siemens Control System IntraLink product is a powerful web-enabled device that connects process control data to the operator.

IntraLink is a prepackaged, web-enabled HMI with features specific to water distribution and wastewater collection applications. Real time data is published to a standard browser (Internet Explorer) in the form of 3D graphic screens, trends, alarms and reports.

IntraLink offers Ethernet and dial-up modem connections. This gives flexibility to access the process from a network connection (intranet, WAN, internet) or using a telephone line.

IntraLink can use e-mail to automatically notify personnel of changing process conditions. This includes trends, alarms and reports.

IntraLink has been designed for small water/wastewater installations where low cost and open secure access is desired.

Cost-effective

IntraLink is a low cost HMI/SCADA solution. This is achieved by packaging the hardware and software specifically for the water and wastewater industry.

Connectivity

IntraLink allows access to your system anytime, anywhere via an Ethernet or dialup modem connection.

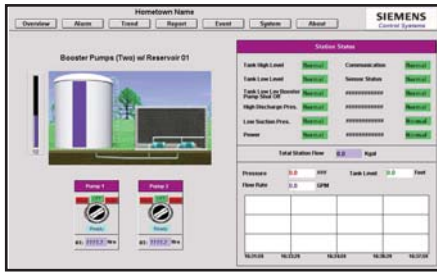
Web-enabled Software

IntraLink monitors and controls the process using a common web browser (Internet Explorer).

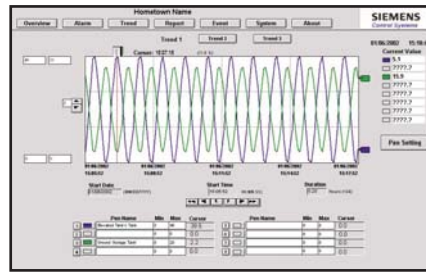
Trending/Reporting & Alarming

IntraLink has full trending, alarming and reporting capabilities. This information can be automatically sent via email to prompt operator action.





Range of site specific displays



Trending up to 32 variables

Preconfigured reports

IntraLink Features

- Web based graphical interface providing an intuitive user friendly window into the system.
- 3D Graphics providing accurate visual process information.
- Remote connectivity via dial-up modem.
- Supports Ethernet connectivity allowing use of existing networks.
- Uses Microsoft Internet Explorer 5.0 for access.
- Unlimited number of users at no additional cost.
- Small footprint, runs on 12-28 Vdc so can be easily mounted in existing control panels using existing power.
- Data logging for up to 32 points providing performance and maintenance information.
- Configured reports.
- Automatically sends report, trend and alarm data as an attachment to e-mail.
- Reports are in CSV format so they can be viewed from Microsoft Excel and Access.
- Multi-level security preventing unauthorized system access.
- Comprehensive alarm log.
- Notification of alarms via e-mail to immediately track process problems.

Description	Part Number
IntraLink	
IntraLink, 64 MB Flash	160000
IntraLink, 128 MB Flash	160001
Hardware	
Operation Temperature	0 to 55 DegC (Storage -20 to 80 DegC)
Modem	PCMCIA dial-up modem
Serial Ports	4 RS-232/485 (COM 1,2,3,4), 2 USB Ports
LAN	One 10/100Base-T Ethernet
Dimensions	6.5" x 4.2" x 1.4", Weight 0.8 kg
Mounting	DIN Rail or Panel
Maximum Power Requirements	+24V @ 1A
Minimum Interface Requirement	PC running Internet Explorer 5.0 & Windows 98/NT
Reports	4 types (level, pressure, flow and runtime)
Number of sites supported	10
Number of Trends	32
Number of concurrent users	8
Graphic Screens	3D animated screens
Water Applications	Tanks, booster pump, booster pump with tank, well pump, valve meter vault
Wastewater Applications	Lift stations with constant or variable speed pumps

Siemens
Water Technologies
1239 Willow Lake Boulevard
Vadnais Heights, MN 55110
651.766.2700 phone
651.766.2701 fax

© 2008 Siemens Water Technologies Corp.
CS-ILNKWSdr-DS-0708
Subject to change without prior notice.

IntraLink is a trademark of Siemens, its subsidiaries or affiliates.

The information provided in this literature contains merely general descriptions or characteristics of performance which in actual case of use do not always apply as described or which may change as a result of further development of the products. An obligation to provide the respective characteristics shall only exist if expressly agreed in the terms of the contract.