

Intra-Link™ LC150 View-At-A-Glance Pump Control-Telemetry Unit

Siemens Water Technologies is proud to introduce the LC150 Pump Controller, the newest addition to the family of "View-At-A-Glance" controllers. For nearly two decades, the D150 Series of "View-At-A-Glance" Pump Controllers has set the standard in the industry for ease of use and reliability. Now the LC150 provides the simplicity customers have come to expect with the advanced features they need – all in one system! The LC150 is designed specifically for pump station applications and offers a simple, reliable and cost effective solution. The new "View-At-A-Glance" interface provides the operator with all the information needed to operate and maintain the pumping system and is UL® listed.

Features

Telemetry Ready - with the addition of a radio, leased phone line or a Link2Site® connection, the LC150 allows you to monitor station status, change pump start and stop setpoints, change high and low level alarm setpoints, acknowledge alarms and view pump run, fail and performance information remotely. The LC150 is an 'open' control platform supporting industry standard communication protocols like Modbus and DF1. This open protocol approach allows the LC150 to be readily integrated into most new or existing SCADA systems. Two serial communication ports allow for redundant telemetry networks.

Versatile - the LC150 can be used to control and monitor up to three constant and/or variable speed pumps in either pump up or pump down mode. The LC150 also has float inputs for backup control.

Time and Date Stamped Alarm/Event Log - the LC150 logs the time and date that alarms and events occur. This historical log provides the operator with the ability to analyze pump performance and system failures.

Volumetric Flow Calculator - the LC150 calculates flow rates based on pump run times or level excursions and logs daily flow, flow rates per pump and influent flow rate per pumping cycle. This information can be viewed locally at the operator interface and remotely via the telemetry connection.

Password Protection - three levels of password security allows only authorized users to modify the controller parameters. With the addition of the iAccess option, you get a record of the individual user with the convenience of not needing a password.

Site Security - with the addition of a simple door switch or motion detector, the LC150 can function as a site security system used to detect unauthorized entry onto the premises.



Simply the Easiest Most User Friendly Pump Control-Telemetry Unit on the Market Today

Custom Scale Ranges

Allows you to scale the controller display precisely to the process.

View-At-A-Glance Operator Interface

View all critical information including: on/off setpoints, level alarm setpoints, level alarms and the process variable without pressing any keys.

Pump Up or Pump Down Mode

Controls 2 or 3 pumps in either mode.

Verify Proper Pump Operation

Two simple up/down keys allows an operator to simulate the process.

Drop in Replacement

Operator Interface has the same footprint as D15x series products. No drilling or modifying the door.

LCD with Backlighting

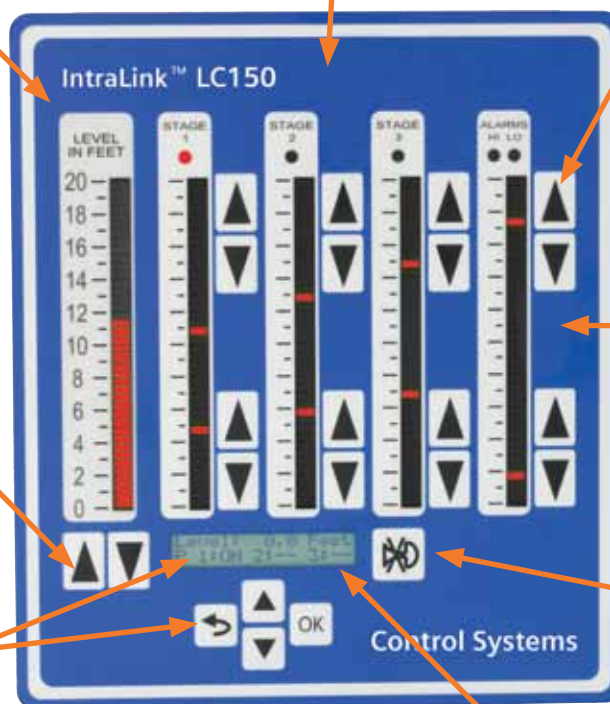
2 line x 16 character display and simple (4-key) key pad allows easy access to more advanced information.

Alarm Control

Easily silence audible alarms and reset latching alarm conditions.

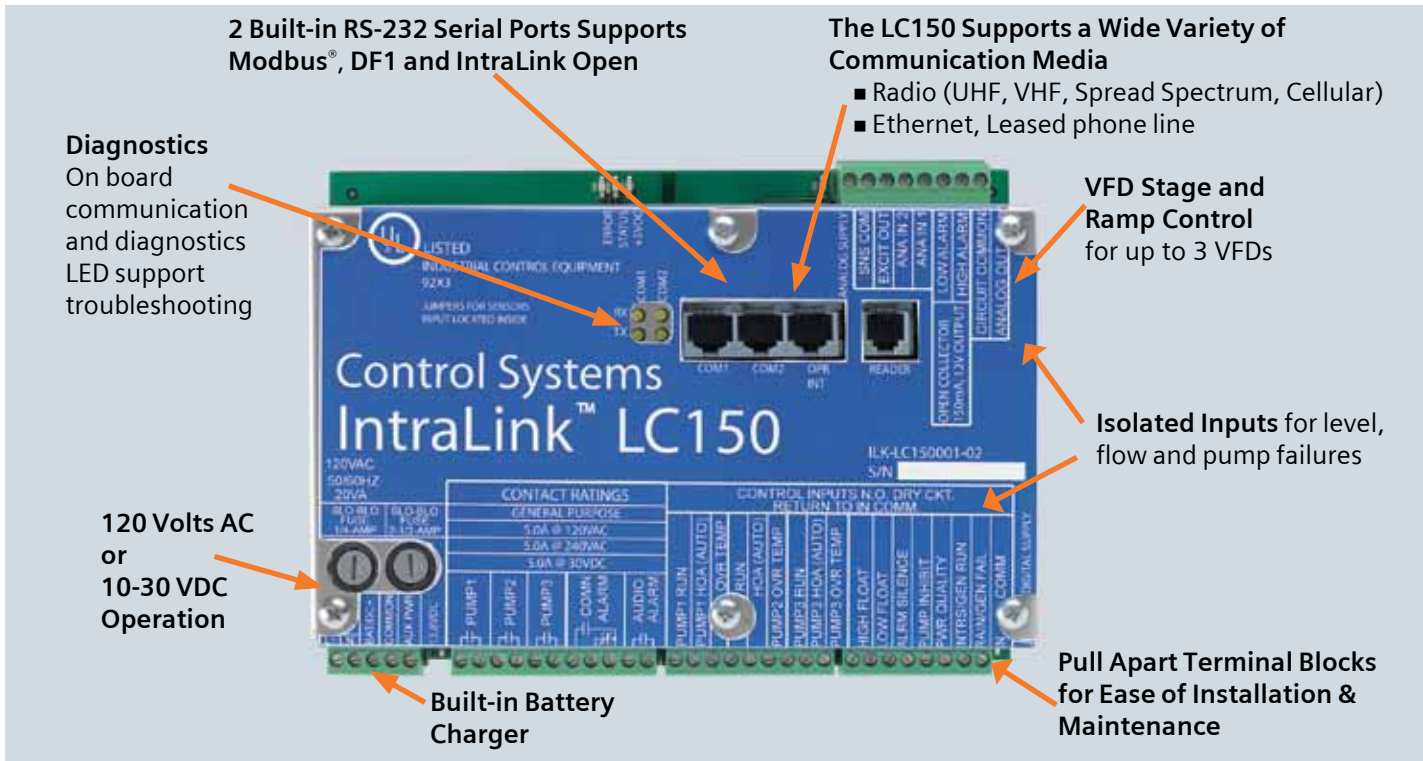
Alternation

The LC150 supports multiple modes of operation configurable through the LCD and keypad.



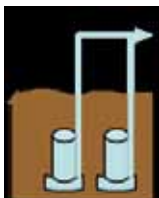
Features In Brief

- 2 or 3 Pump Control
- UL® Listed
- Alarm/Event Log
- VFD Control
- Volumetric Flow Calculator
- Security
- Telemetry Ready
- Protocols
 - DF1,
 - Modbus
 - Intra-Link™ Open
- Link2Site® Compatible

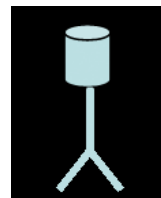


DIN rail mounted I/O base

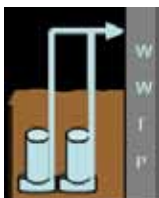
Applications



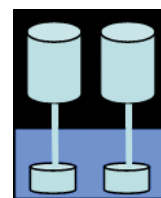
Sewage Lift Pump Station - Controls pumps based on locally monitored wetwell level. Supports both level transmitter and float switch control inputs for primary and back up control strategies.



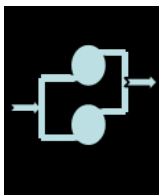
Well Pump Station - Controls pumps based on locally monitored pressure/level sensor or remotely telemetered tank level.



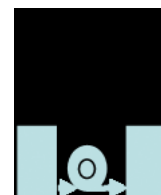
WWTP Influent or Effluent Pump Station - Controls pumps based on locally monitored wetwell level. Supports both level transmitter and float switch control inputs for primary and back up control strategies.



Raw Water Pump Station - Controls pumps based on locally monitored or telemetered flow rate/pressure/level sensor signal.



Booster Pump Station - Controls pumps based on locally monitored discharge pressure sensor or remotely telemetered tank level.



Transfer Pump Station - Controls pumps based on locally monitored wetwell level. Supports both level transmitter and float switch control inputs for primary and back up control strategies.



Irrigation Pump Station - Controls pumps based on locally monitored discharge pressure or flow rate.

Simply the Most Advanced Pump Control-Telemetry Unit on the Market Today

Time and Date Stamped Alarm/Event Log
Stores the last 100 Alarm/Events.

Two Piece Design
Door mounted operator interface and DIN rail mounted I/O base.

Pump Protection
The LC150 controller will detect failed pumps, and take the failed pump out of service until corrected and reset.

Volumetric Flow Calculation
The controller can calculate station flows with or without a flow meter.

Pump Run Data

- Total run time
- Total number of starts
- Maximum hourly starts
- Average number of starts/day
- Total pump flow
- Average flow rate of the pump

Security Protection

- 3 level password security
- Detect unauthorized station access (intruders) with a door switch input and an operator interface security password.
- Activates local alarm and telemeters unauthorized entry to a central monitoring point.
- Optional iAccess reader provides individual user authorization and logging with time and date stamp.

Calculated Flow Statistics

- Total station flow
- Average daily flow
- Maximum daily flow

A utility can monitor the pumps performance over time and perform maintenance on a pro-active basis rather than a reactive one.

A utility can monitor station performance and spot potential problems.

Siemens
Water Technologies
1239 Willow Lake Boulevard
Vadnais Heights, MN 55110
800.224.9474 phone
651.766.2700 phone
651.766.2701 fax

© 2010 Siemens Water Technologies Corp.
CS-LC150-DS-0710
Subject to change without prior notice.

UL is a registered trademark of Underwriter's Laboratory, Inc.
Modbus is a registered trademark of Schneider Automation, Inc.
NEMA is a registered trademark of National Electrical Manufacturers Association.

The information provided in this literature contains merely general descriptions or characteristics of performance which in actual case of use do not always apply as described or which may change as a result of further development of the products. An obligation to provide the respective characteristics shall only exist if expressly agreed in the terms of the contract.