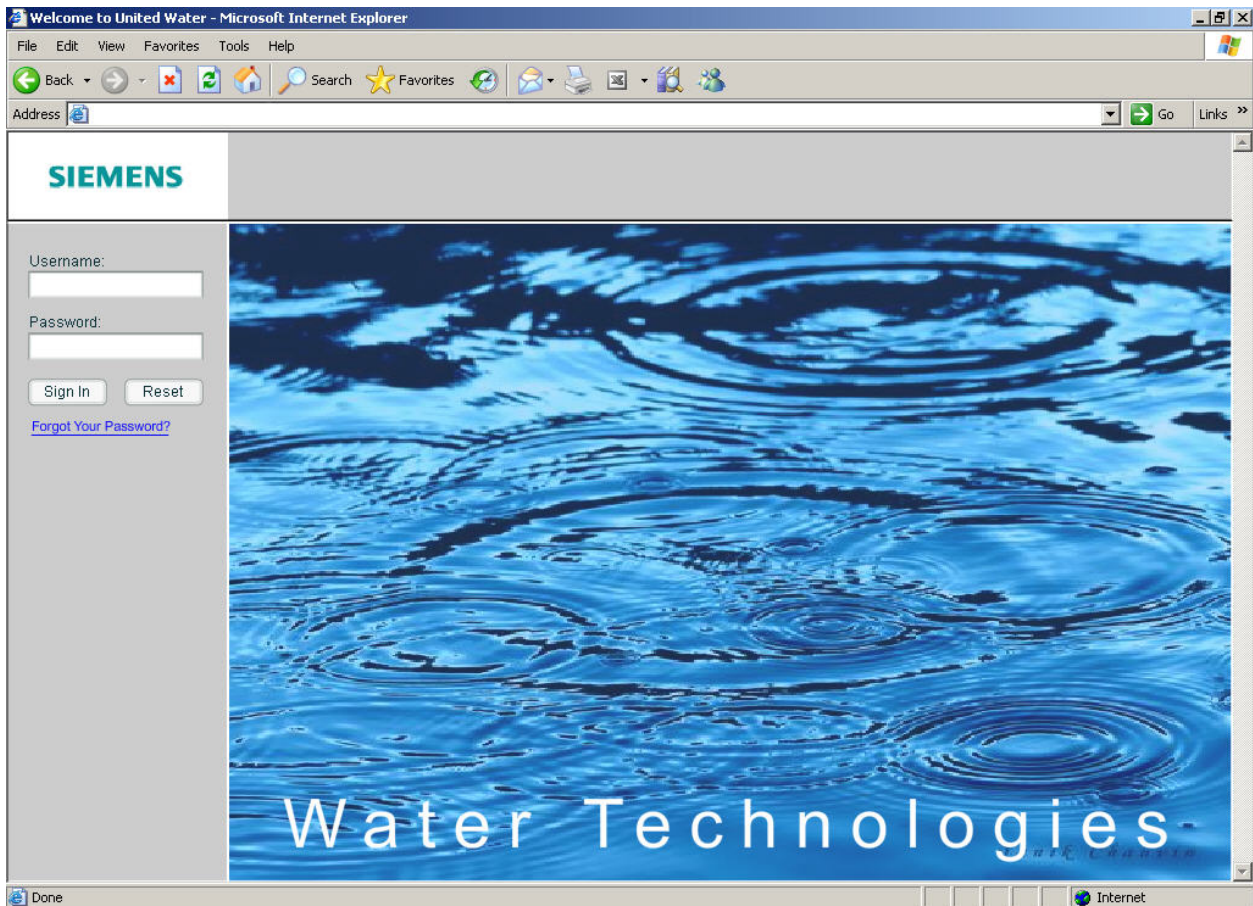


4. Home Screen

The application has 2 home screens based on state of the application and user.

Login page

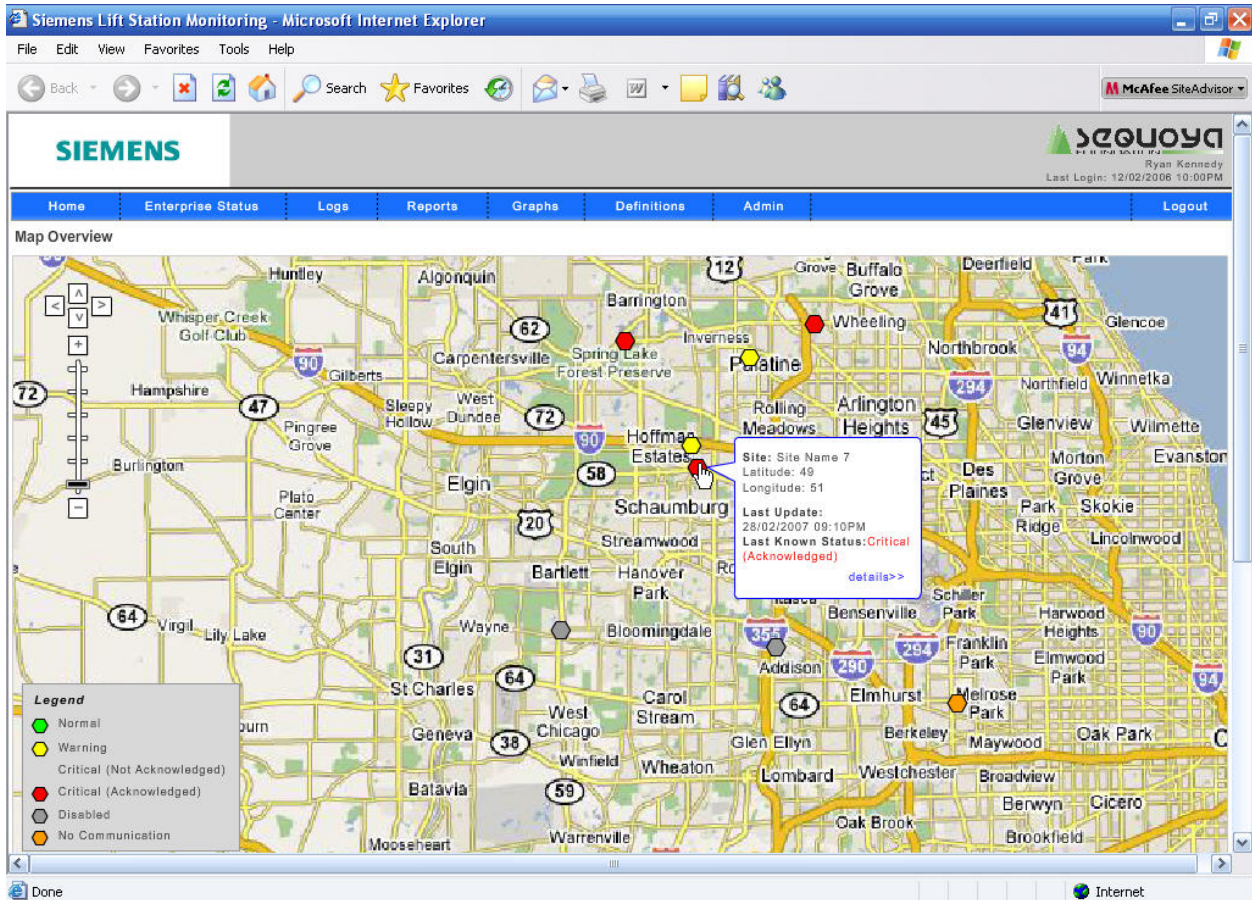
In the default state, the login page is the home page. The user cannot access any page of the application without logging in. Clicking Siemens logo will redirect the user to Siemens Water Technologies product information Web site.



Controls	Description
Siemens Logo	Serves as a link for the Siemens Water Technologies product information Web site.
Username & Password fields	User enters a username and password provided by administrators. The username is unique for every user and authenticates the user along with authorizing the access rights to the application
Sign In button	Clicking on this button will initiate the sign-in process at server.
Reset button	Clears the username and password field entries.
Forgot Your Password	Link that will redirect the user to a page where they can request their password be sent if they enter the correct security word. Also gives them contact information for Siemen's support.

Map Overview

This is the homepage for customers. This page gives a geographic based view of all sites in assigned to the customer who is logged in. This works very similar to Google map and highlights all the lift stations a corporate customer has. The lift stations are color coded based on overall status of the lifts.



The possible lift statuses are:

- Normal
- Warning
- Critical (Not Acknowledged)
- Critical (Acknowledged)
- Disabled
- No Communication

On moving the mouse over any of the lift station icons, a pop-up occurs showing the Lift station name, Address, Last update timestamp, Last known status, and if the status is an Alarm, then alarm type.

Link2Site User Interface – Section 4

The icons for lift stations with Critical (Not Acknowledged) alarms blink in order to highlight its criticality.

Controls/Display	Description
Siemens Logo	Serves as a link for the homepage.
Menu Bar	All pages of the application accessible to the user will be available in the menu options.
Map	Map view showing the location of the customers sites. Users can hold and drag their mouse to move the map.
Zoom & Pan Buttons	<p>There are 6 levels of zoom. User can either drag the zoom pointer directly or use zoom-in and zoom-out buttons.</p> <p>The 4-directional buttons are used to pan the map in all 4 directions.</p>
Lift Station icons	Depicts all the lift stations belonging to the customer. Color and state of icons depict the status of lift station.
Call-out	<p>When users move their mouse over any of any lift station icons, a call-out appears that gives a few details about the location and state of the lift station.</p> <p>This call-out disappears and moving the mouse away from the marker and call-out.</p>
Details Link	This link takes the user to site details page for the site with the call-out open.
Legend	Gives a legend of the markers used on map.