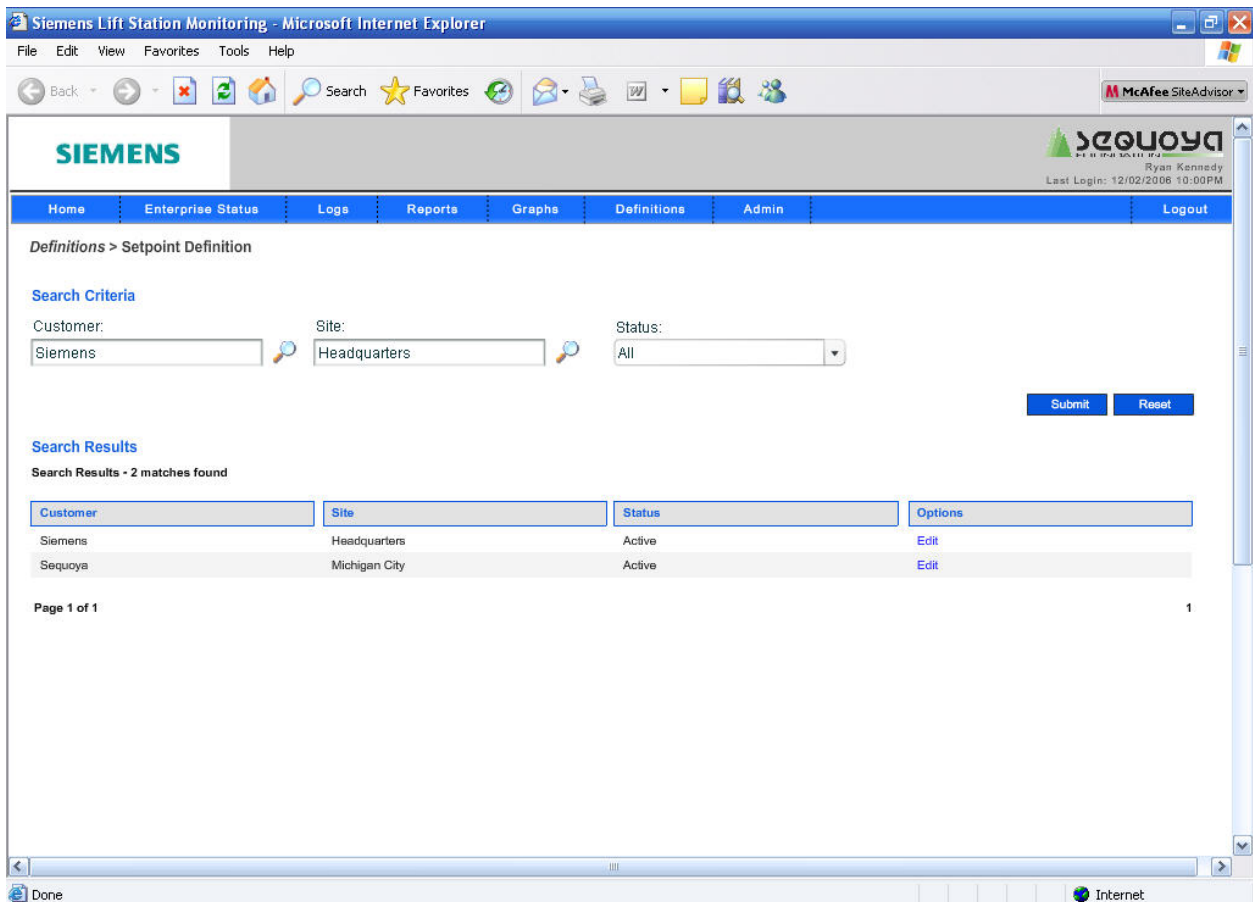


9. Setpoints

Setpoint Definition

The user can use the Setpoint Definition screen and related search criteria to select a site, or the user can click the Setpoint button on the Site details screen to navigate to the desired sites setpoint configuration screen.



Clicking on the Edit text will take the user to the setpoints configuration screen.

This page is the setpoints configuration page for the selected site. The user can change local setpoints, override pump operations, and reset flow and pump data from this screen.

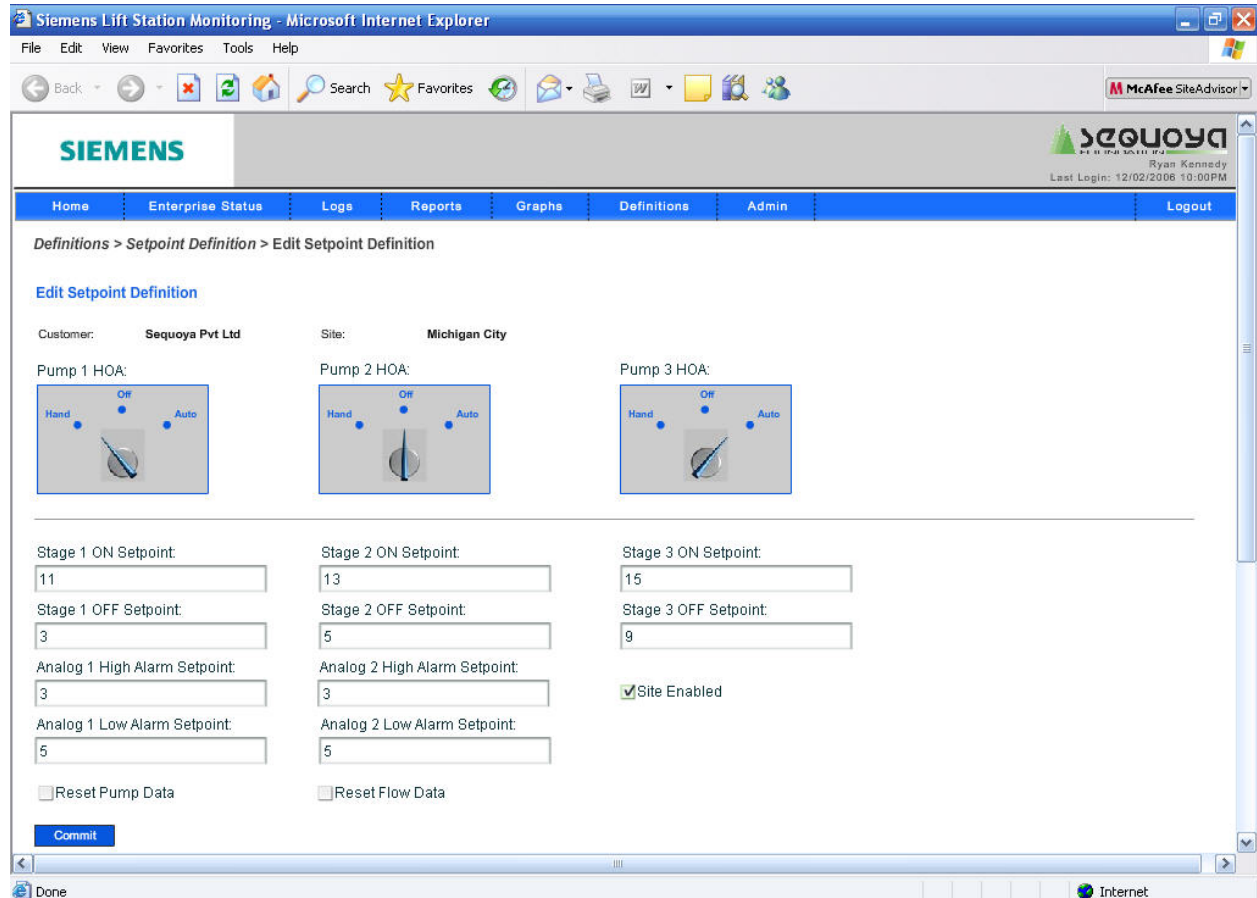
The HOA controls can be used to take the pump out of automatic operation and put it in Hand (ON) or OFF. The presence or absence of HOA controls on this page is

Link2Site User Interface – Section 9

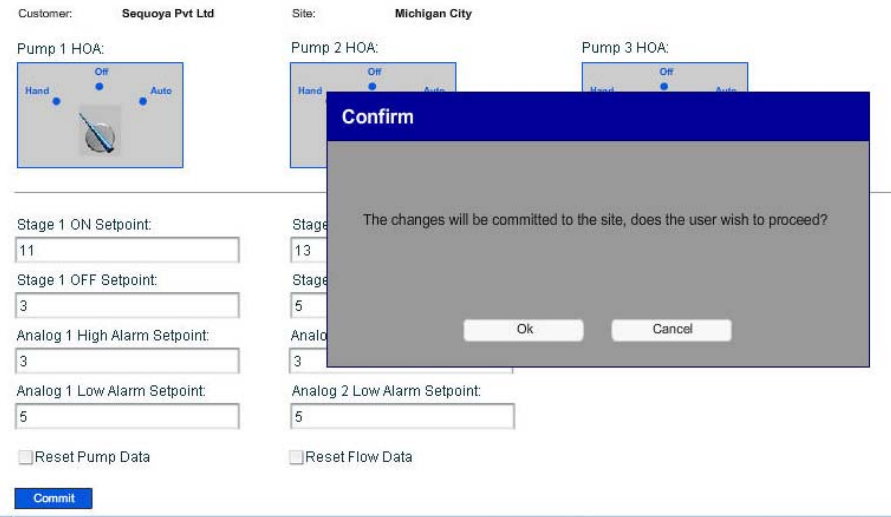
controlled by setting in the site configuration page. HOA controls are not available if the remote LC150 is a monitoring only unit.

Setpoint changes will only be sent to the remote unit when the changes are committed via pressing the commit button.

A site can be disabled to stop communications from occurring between the remote and the server. This is used when the remote site is generating unwanted alarms.



Controls/Display	Description
Enable checkbox	Check the box to enable communications between the remote LC150 and the server
Reset Pump Data	Check this box before pressing the Commit button to clear all pump data (number of starts, runtime etc)
Reset Flow Data	Check this box before pressing the Commit button to clear all station flow data (total station flow, max daily flow etc)
Pump HOA	Click on the desired state (Auto, OFF, Hand) to override the state of each Pump.

Input Fields	Enter a number for each stage and alarm setpoint.
Commit button	<p>Pressing the button saves the changes to the database and sends the changes to the selected site. In order to proceed, user has to confirm this action in a popup.</p>  <p>On completion, user is taken back to list of sites.</p>