

# Chain and Scraper Rectangular Clarifier Retrofit Program

## Chain and Scraper Retrofit Program

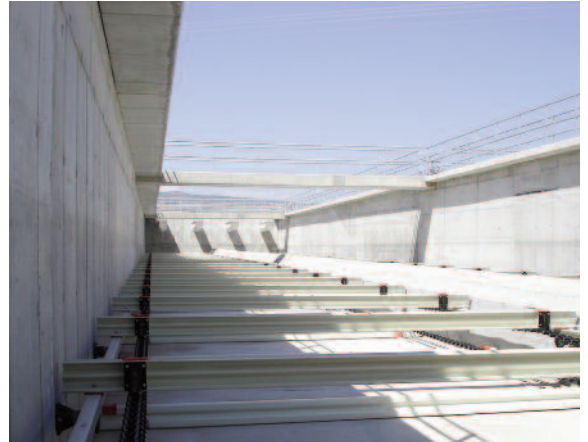
Siemens offers a chain and scraper mechanism retrofit program, which provides a high level of continued service to clarifier customers. Program highlights include site inspections, engineering support, component upgrades and standardization and installation assistance.

### Program Features:

- On-site inspection and quotation services
- Equipment retrofit with your crew or ours
- Replacement can be offered on a turnkey basis
- Non-Metallic components for all applications
- Personnel training
- Maintenance guidelines
- Standardization of components
- Upgrades to current technologies

### Retrofitting Any Manufacturer's Existing Equipment:

- Replacement components for all competitors equipment; Polychem (Budd), Jeffery, NRG, Walker, Amwell
- Dedicated Service Engineer available to discuss any questions you may have on your new chain and scraper equipment
- Landfill leachate
- Refinery & petrochemical wastewater treatment
- Pulp & paper wastewater treatment
- Septage treatment



Siemens  
Water Technologies  
1901 South Prairie Avenue  
Waukesha, WI 53189  
262.547.0141 phone  
262.547.4120 fax  
[www.siemens.com/water](http://www.siemens.com/water)

Adsorption Clarifier, Sludge Sucker and Trident are trademarks of Siemens, its subsidiaries or affiliates.

The information provided in this literature contains merely general descriptions or characteristics of performance which in actual case of use do not always apply as described or which may change as a result of further development of the products. An obligation to provide the respective characteristics shall only exist if expressly agreed in the terms of the contract.

© 2009 Siemens Water Technologies Corp.  
EN-CSRETROdr-DS-0809  
Subject to change without prior notice.