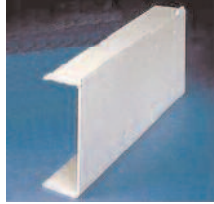


# Envirex<sup>®</sup> Chain & Scraper Flight Types

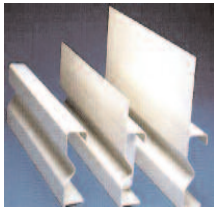
## Channel

- 8-in (203 mm) high
- Tanks up to 20-ft (6.0 m) wide
- Moment Of Inertia:  
1.11 in<sup>4</sup> (46 cm<sup>4</sup>)



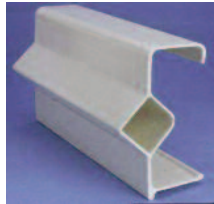
## Sigma Plus

- Tanks up to 24-ft (7.3 m) wide
- Moment Of Inertia:  
2.01 in<sup>4</sup> (84cm<sup>4</sup>)



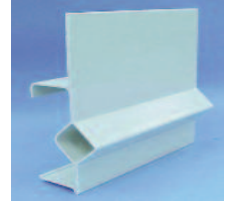
## Diamond

- Tanks up to 33-ft (10.0 m) wide
- Moment of Inertia:  
3.57 in<sup>4</sup> (149 cm<sup>4</sup>)



## Flight Extensions

- Increases flight strength properties
- Keeps sludge from totally moving over top of flight
- Available on Diamond and Sigma Plus flights



Siemens  
Water Technologies  
1901 South Prairie Avenue  
Waukesha, WI 53189  
262.547.0141 phone  
262.547.4120 fax  
[www.siemens.com/water](http://www.siemens.com/water)

Envirex, Adsorption Clarifier, Sludge Sucker and Trident are trademarks of Siemens, its subsidiaries or affiliates.

The information provided in this literature contains merely general descriptions or characteristics of performance which in actual case of use do not always apply as described or which may change as a result of further development of the products. An obligation to provide the respective characteristics shall only exist if expressly agreed in the terms of the contract.

© 2009 Siemens Water Technologies Corp.  
EN-FLIGHTTYPEsdr-DS-0809  
Subject to change without prior notice.