



316 Stainless Steel, Single-Tube Filter Housing

For Code F

This single-tube cartridge filter housing is made of cast 316 stainless steel and includes 316 stainless steel shell. Housings are available to accommodate 10, 20 or 30-in Code F filter cartridges. The inlet and outlet are 3/4" NPT, and the bowl of each housing is fitted with a 1/4" NPT drain plug. This cartridge filter housing is ideal for a wide variety of low flow applications requiring a high quality prefilter housing or for applications where an industrial pre-filter is used.

- Single tube housings accommodate 10", 20" and 30" Code F filter cartridges
- Housing uses 316SS for construction of the head, bowl and port plug
- Inlet and outlet connections are made to the housing head, allowing cartridges to be replaced without disconnecting the inlet/outlet piping
- Housing can be autoclaved or hot-water sanitized with the cartridges in place for your convenience

SPECIFICATIONS

Dimensions

| | |
|--------------------|-----------------|
| 10-in Housing..... | 13.5" (34.3 cm) |
| 20-in Housing..... | 23.5" (59.7 cm) |
| 30-in Housing..... | 33.5" (85.1 cm) |

| Length (A) | Width (B) |
|-----------------|----------------|
| 13.5" (34.3 cm) | 4.75 (12.1 cm) |
| 23.5" (59.7 cm) | 4.75 (12.1 cm) |
| 33.5" (85.1 cm) | 4.75 (12.1 cm) |

Materials

| | |
|---------------------|---------------------|
| Bowl and Head | 316 stainless steel |
| Port Plugs | 316 stainless steel |
| O-ring | Ethylene Propylene |

Operating Parameters

| | |
|------------------------------|-----------------------------------|
| Max Operating Pressure | 175 psi (12.1 bar) @ 200°F (93°C) |
| Max Housing Flow Rate | 12 gpm (45.4 lpm) |

Note: Housing rating only, safe operating pressure will depend on filter cartridge and gaskets used.

Connections

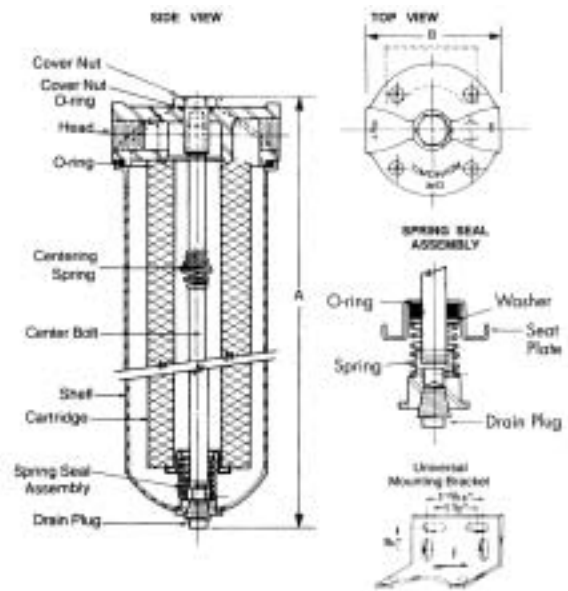
| | |
|--------------------|----------|
| Inlet/Outlet | 3/4" NPT |
| Drain | 1/4" NPT |

Mounting

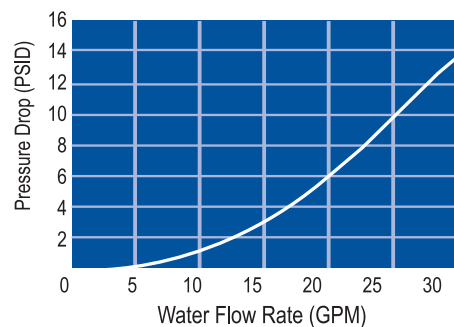
Should be mounted by rigid pipe connections or with optional mounting bracket. Allow enough clearance below bottom of housing to allow cartridge to be changed.

Flow Direction

"Inlet" and "Outlet" are cast on the housing head for user convenience.



HOUSING PRESSURE DROP vs. LIQUID FLOW RATE



ORDERING INFORMATION

Catalog Number and Description

| | |
|-----------|-------------------|
| ZHDFD1001 | 10" housing |
| ZHDFD2001 | 20" housing |
| ZHDFD3001 | 30" housing |
| ZHDXDB001 | Mounting Bracket |
| B10015866 | Shell O-ring EPDM |