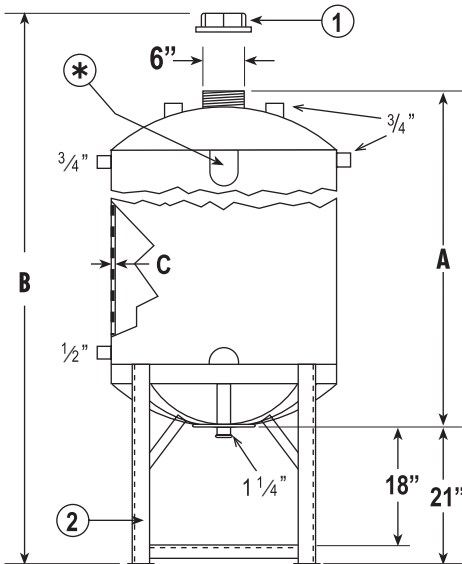
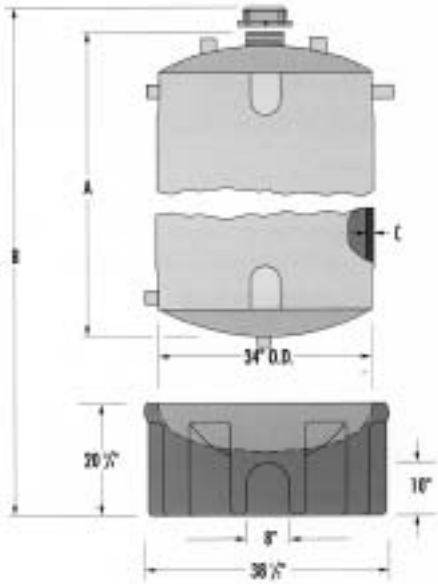


Terrapure[®] 1,2 Storage Tanks

Terrapure[®] Storage Tanks are designed for the purest process water or chemistries. They have a one-piece capsule design that provides for complete drainage.

- Viton[®]-gasketed 6" screw lid maintains nitrogen blanket pressure
- Supplied with six unique "no-profile" fittings ensure that there are no internal tank protrusions to collect particles, and no crevices, welds or seams to support microbial growth
- Totally enclosed, one-piece rotationally molded construction yields a rugged, seamless, corrosion-free container suitable for an almost unlimited number of solution, storage and dispensing applications
- All-plastic pedestal molded entirely of LPE (no metal reinforcement), capable of supporting loads up to 4000 lb.
- Convenient "mousehole" provides easy access to the bottom center fitting
- Only 34" in diameter to fit through standard doors
- Can be steam cleaned (up to 190°F) and features materials that comply with FDA regulations



1: 6" Viton[®] gasketed screw cap
 2: Painted Carbon Steel Stand
 3: Molded-in fitting flats (typical 8 places)

SYSTEM SPECIFICATIONS*

| Catalog Number | TPPBWF125 | TPSBWF125 | TPPBWF250 | TPSBWF250 |
|--------------------------|-----------|-----------|-----------|-----------|
| Capacity | | | | |
| gallons..... | 125 | 125 | 250 | 250 |
| Base Material..... | Plastic | Steel | Plastic | Steel |
| <i>System Dimensions</i> | | | | |
| A..... | 44" | 44" | 81" | 81" |
| B..... | 61" | 67" | 96" | 104" |
| C..... | 5/16" | 5/16" | 5/16" | 5/16" |
| <i>Shipping Weight</i> | | | | |
| Tank (lbs.)..... | 50 | 50 | 81 | 81 |
| Pedestal (lbs.)..... | 68 | 100 | 68 | 100 |

*Please contact Technical Support to obtain a drawing with exact fitting locations

1 Tank must be vented to atmosphere at all times

2 Food grade construction complies with FDA regulations