

## Water Technologies

# CIP (Clean-in-place) Series Cleaning Skids

# SIEMENS

Siemens Water Technologies CIP Cleaning Skids are designed for on-site cleaning of reverse osmosis (RO) systems. They can accommodate cleaning flow rates of 30 to 225 gallons per minute (gpm), and are compatible with TFC or CA membrane elements. These factory assembled, tested and field-ready cleaning skids offer a convenient and economical way to maximize your RO investment.

### CIP SERIES BENEFITS:

- **Portability for quick and easy on-site cleaning (models CIP-30 & 60)**
- **Rugged construction that stands up to all cleaning chemicals**
- **Recommended by the membrane element manufacturers**

### CIP SERIES FEATURES:

- 304SS centrifugal pump
- LPE (linear polyethylene) chemical tank with cover
- Recirculation valve for chemical mixing
- Low feed pressure switch for pump protection
- Tank drain valve
- SCH 80 PVC piping
- Polyurethane-coated steel frame
- Cartridge filtration
- Flowmeter
- Temperature indicator
- Pump discharge pressure indicator
- NEMA 4 electrical enclosures:
  - UL Listed
  - Pump motor disconnect switch
  - Power on light
  - Pump run light
  - Low tank level alarm

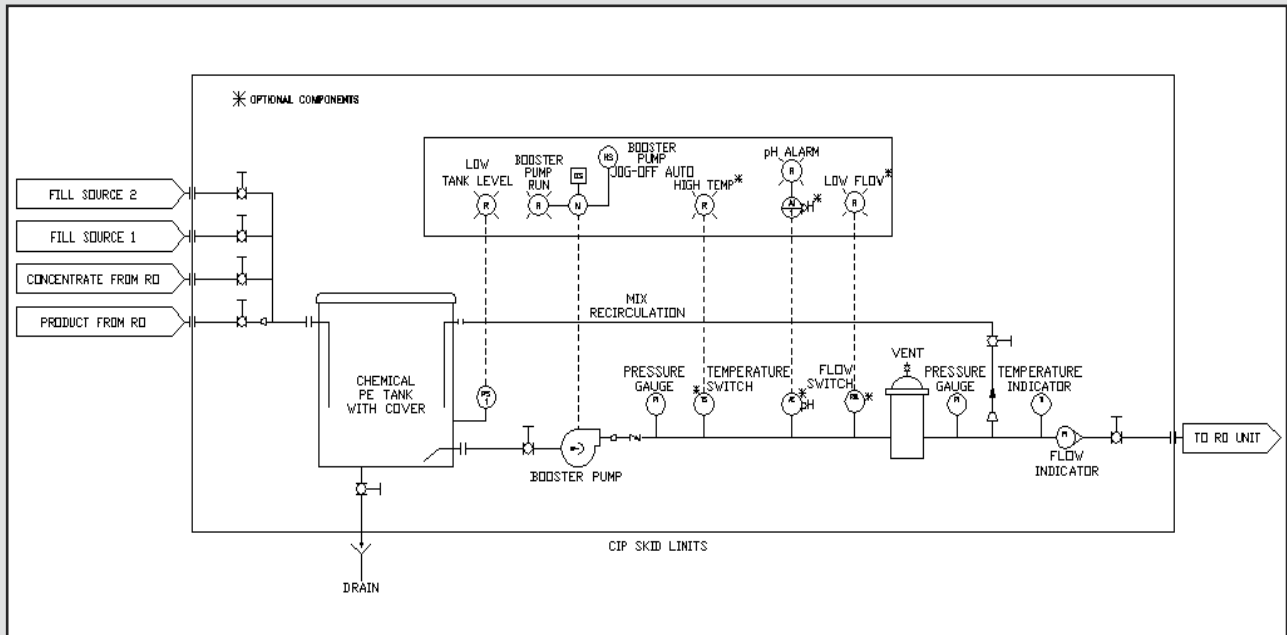


## System Specifications

Model Number	Flow Rate at 60 psi	Tank Capacity (gallons)	Connection Size	Base	System Dimensions H x W x D*		Operating Weight Industrial		Electrical Requirements Pump Electrical	
					inch	cm	lb	kg		
CIP-30	30	90	1-1/2"	Mobile	67x41x72	26x16x28	1250	567	5 HP	240/480V/60
CIP-60	60	200	2"	Mobile	69x41x72	27x16x28	2600	1179	5HP	240/480V/60
CIP-90	90	275	2"	Fixed	69x51x90	27x20x35	3500	1588	10HP	240/480V/60
CIP-150	150	440	3"	Fixed	69x64x106	27x25x42	6000	2722	10HP	240/480V/60
CIP-225	225	800	3"	Fixed	78x78x128	31x31x50	9500	4309	15HP	240/480V/60

\*Dimensions are for skid-mounted equipment only, additional space for portable ion exchange units is required.

## Process & Instrumentation Diagram



## Cleaning Skid Options

Description
pH Monitor
High Temperature Switch
Flow Switch
1" x 25' Hose Kit
1-1/2" x 25' Hose Kit
2" x 25' Hose Kit
3" x 25' Hose Kit

The information provided in this brochure contains merely general descriptions or characteristics of performance which in actual case of use do not always apply as described or which may change as a result of further development of the products. An obligation to provide the respective characteristics shall only exist if expressly agreed in the terms of contract.

UL is a trademark of Underwriters Laboratories Inc.

Siemens  
 Water Technologies  
 10 Technology Drive  
 Lowell, MA 01851  
 Technical Support: 800.875.7873 ext 5000  
 Customer Support: 800.466.7873  
 Phone: 978.934.9349 ext 5000  
 Fax: 978.441.6025  
[www.siemens.com/water](http://www.siemens.com/water)

©2007 Siemens Water Technologies Corp.  
 PWS-CIP-DS-0407  
 Subject to change without prior notice