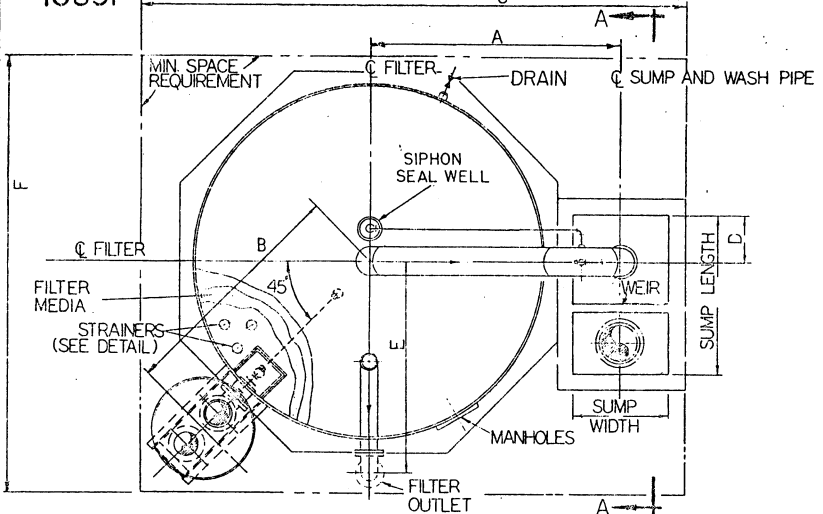
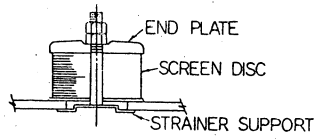
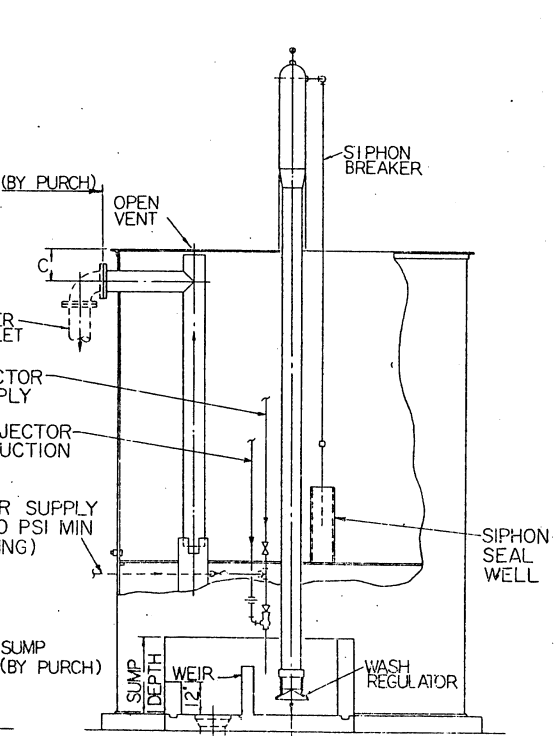
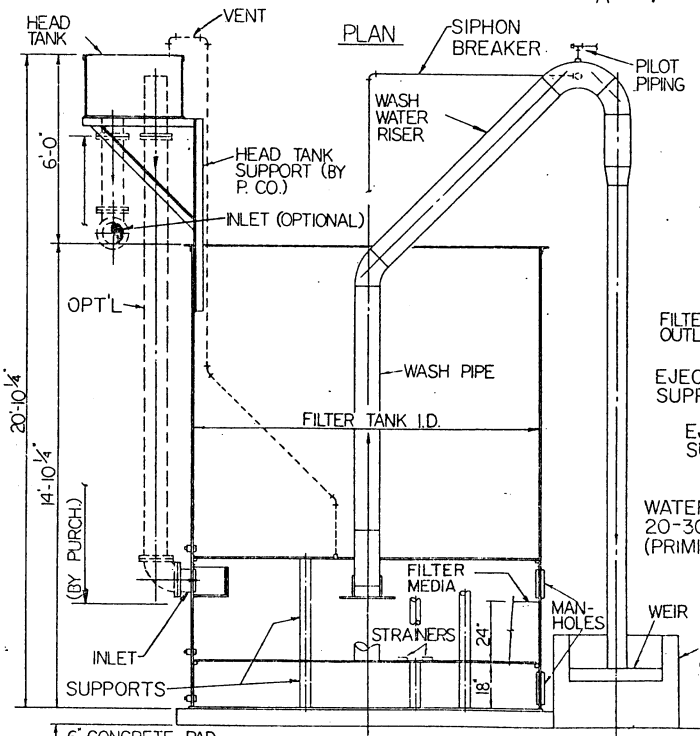


10891-681



FILTER TANK INSIDE DIA.	INLET & OUTLET PIPE SIZE		SUMP DATA				WASH WATER	A	B	C	D	E	F	G	SHIPPING	WEIGHT (LBS.) PER UNIT OPERATING
	WIDTH	LENGTH	DEPTH	DRAIN PIPE SIZE	WEIR	WEIR										
3'-0"	2"	3'-0"	4'-6"	2'-0"	6"	147	3'-9"	2'-10 3/16"	8"	12"	2'-4 3/16"	6'-4"	9'-10"	2,600	9,900	
4'-0"	2 1/2"	3'-0"	4'-6"	2'-0"	8"	263	4'-6"	3'-5 1/16"	8"	12"	2'-11 1/16"	7'-2"	10'-8"	3,500	16,500	
5'-0"	3"	3'-0"	4'-6"	2'-0"	8"	412	5'-0"	3'-11 3/16"	8"	12"	3'-11 3/16"	8'-1"	11'-7"	4,400	24,700	
6'-0"	4"	3'-0"	4'-6"	2'-6"	10"	594	5'-6"	4'-6 5/16"	8"	12"	4'-0 5/16"	9'-0"	12'-6"	5,400	34,600	
7'-0"	4"	3'-0"	4'-6"	2'-6"	10"	809	6'-0"	5'-0 3/16"	8"	12"	4'-6 5/16"	9'-10"	13'-4"	6,300	45,900	
8'-0"	6"	3'-0"	4'-6"	2'-6"	12"	1,056	6'-6"	5'-9 1/16"	10"	15"	5'-2 1/16"	10'-10"	14'-4"	7,300	58,500	
9'-0"	6"	3'-0"	4'-6"	2'-6"	12"	1,336	7'-0"	6'-3 1/16"	10"	15"	5'-8 1/16"	11'-10"	15'-4"	8,500	73,800	
10'-0"	6"	3'-0"	5'-0"	2'-6"	14"	1,649	7'-6"	6'-9 1/16"	12"	18"	6'-2 1/16"	12'-8"	16'-2"	9,700	91,900	
11'-0"	8"	3'-0"	5'-0"	2'-6"	14"	1,995	8'-0"	7'-5 1/16"	12"	18"	6'-9 1/16"	13'-9"	17'-3"	11,200	109,200	
12'-0"	8"	3'-0"	5'-0"	2'-6"	14"	2,373	8'-6"	7'-11 1/16"	13"	18"	7'-3 1/16"	14'-7"	18'-1"	12,200	129,500	
13'-0"	8"	3'-6"	5'-0"	3'-0"	15"	2,787	9'-3"	8'-5 1/16"	12"	18"	7'-9 1/16"	15'-6"	19'-6"	13,700	143,000	
14'-0"	8"	5'-0"	5'-2"	3'-0"	16"	3,232	10'-6"	9'-0 1/16"	12"	18"	8'-3 1/16"	16'-8"	22'-2"	15,100	173,600	
15'-0"	10"	5'-0"	5'-2"	3'-0"	18"	3,711	11'-0"	9'-8 3/16"	12"	18"	8'-11 1/16"	17'-8"	23'-2"	16,100	199,300	
16'-0"	10"	5'-0"	6'-0"	3'-6"	18"	4,223	11'-6"	10'-2 3/16"	12"	18"	9'-5 1/16"	18'-6"	24'-0"	17,300	215,000	
18'-0"	10"	5'-0"	7'-0"	3'-6"	20"	5,345	12'-6"	11'-3 3/16"	12"	22"	10'-5 1/16"	20'-6"	28'-0"	21,200	267,100	
20'-0"	12"	5'-0"	7'-0"	3'-6"	24"	6,598	13'-6"	12'-5 3/16"	13"	22"	11'-6 1/16"	22'-10"	29'-4"	29,000	405,300	
22'-0"	12"	5'-0"	8'-0"	4'-0"	24"	7,982	14'-6"	13'-5 3/16"	13"	2'-5"	12'-6 1/16"	23'-10"	29'-4"	29,000	405,300	
25'-0"	14"	6'-0"	9'-0"	4'-6"	30"	10,300	16'-6"	15'-2 1/2"	14"	2'-6 1/2"	14'-2 1/2"	26'-11"	33'-5"	34,500	522,000	



STRAINER DETAIL (INSTALLED BY PURCHASER)

NOTES -

1. ALL PIPING GREATER THAN 3" FURNISHED BY PERMUTIT CO. CUT TO PROPER LENGTH FOR FIELD WELDING BY OTHERS.
2. ALL PIPING SHOWN DOTTED TO BE FURNISHED BY PURCHASER.
3. TANKS UP TO & INCL 11'-0" I.D. TO BE SHIPPED SET UP. TANKS 12'-0" & OVER ARE SHIPPED UNASSEMBLED.
4. ALL PIPE SUPPORTS BY PURCHASER.
5. ALL PILOT PIPING BY PERMUTIT CO. & TO BE CUT TO SUIT IN FIELD BY PURCHASER.
6. PURCHASER TO PROVIDE MEANS FOR ISOLATING UNIT.
7. FOR OPTIONAL LOOPSEALTANK ASSY. SEE DWG. 185-21942.

SINGLE UNIT LAYOUT OF INDUSTRIAL TYPE AUTOMATIC VALVELESS GRAVITY FILTERS

USFILTER

DRAWN BY: FDR
CHECKED BY:

NOTE: DO NOT SCALE THIS DRAWING USE DIMENSIONS ONLY.

UNLESS OTHERWISE SPECIFIED THE PERMUTIT COMPANY SUPPLIES only the water purification unit proper, and does not furnish any labor or material for erection, masonry, steel or wood construction, or alterations, or existing structures.

UNLESS OTHERWISE SPECIFIED THE PURCHASER SUPPLIES labor and material for all foundations, supports, platforms, ladders, etc., storage tanks, water pumps, motors, electrical connections, piping up to the limit and from the outlet of the water purification plant proper, bypass connections, sumps and drains, and all piping shown shaded on this drawing.

UNLESS OTHERWISE SPECIFIED all pressure vessels in this plant are designed for maximum working pressure of 50 lbs. per square inch.

REV. NO.	DATE	REVISIONS
A	12-15-73	REVISED FOR 185-1680
B	12-15-73	REVISED FOR 185-1680
C	12-15-73	REVISED FOR 185-1680

DATE: 12-11-73 185-16801