

# Chemquill™ Injector

## General Description

The Chemquill™ Injector is designed to inject chemicals into the circulation pipework eliminating contact with pool water within the solution tube, therefore significantly reducing the build-up of scale deposits which can block the injector.

In practice, no injector is completely free from build-up of scale deposits, but due to the self cleaning action of the silicon sleeve, it will last considerably longer between routine maintenance than conventional chemical injection methods.

## Maintenance

Maintenance of the Chemquill™ Injector should be carried out by suitably trained and/or competent persons only. Before attempting maintenance on injection points, ensure appropriate Personal Protective Equipment (PPE) is worn and a water supply is available in case of spillage.

1. Switch off the chemical dosing pump and, in accordance with the dosing pump manufacturer's instructions, relieve the pressure in the discharge hose.
2. Loosen the locking nut so that the solution tube will begin to withdraw. The solution tube will not completely pull out, as there is a stop on the lance.
3. Once the solution tube end has passed through the 1/2" valve, close off the valve.
4. Unscrew the extension piece from the valve and withdraw the solution tube completely.

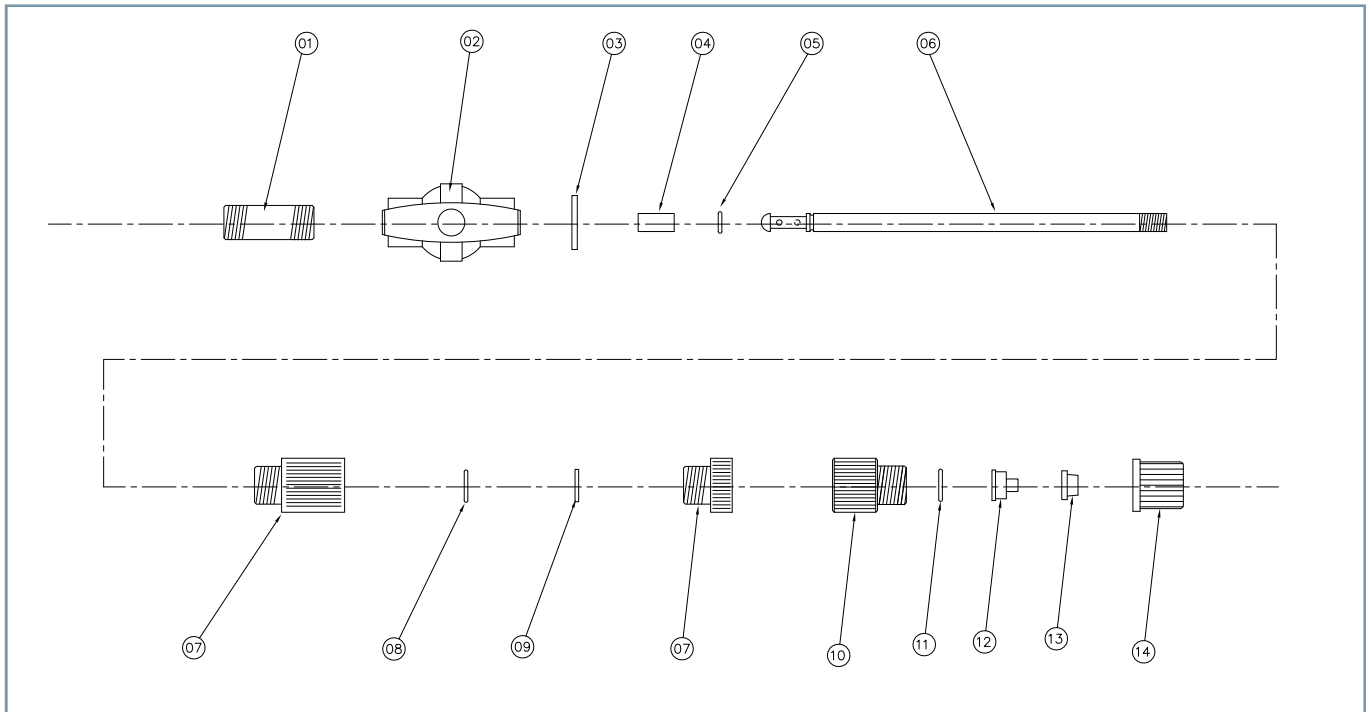
## Key Benefits

- Introduces chemicals into the circulation pipework reducing blockages with scale deposits
  - Self cleaning, increasing time between routine maintenance
  - Low cost
  - Integral non-return valve to prevent back-syphoning
5. Inspect the solution tube for scale build up, beginning with weekly inspections, up to a maximum frequency of every 6 - 8 weeks
  6. To clean, wash in warm water.
  7. Should the end of the solution tube have a build up of salts, such that normal operation is severely restricted, remove and discard the silicon sleeve. Clean recessed housing prior to fitting a new silicon sleeve.



## Data Sheet

## General Layout



## Component Part Numbers

01	2189	1/2" T/T Nipple
02	2197	1/2" T/T Ball Valve
03	4567	'O' Ring
04	5032-A	Silicon Hose
05	5040	Solution Tube End 'O' Ring
06	5044	Solution Tube
07	5043	Locking Nut Adapter
08	5033	'O' Ring
09	5030	Backing Ring
10	5046	Hose Adaptor
11	4380051222	'O' Ring
12	71192 70194	3/8" Cone 1/2" Cone
13	70193 70195	3/8" Sleeve 1/2" Sleeve
14	70182	Coupling Nut
	5034-Kit	Spares Kit 1 x item 3 4 x item 4 1 x item 5 1 x item 8 1 x item 9

Siemens  
Water Technologies

Germany  
+49 8221 9040  
wtger.water@siemens.com

United Kingdom  
+44 1732 771777  
wtuk.water@siemens.com

USA  
+1 800 809 0971  
stranco.water@siemens.com

© 2009 Siemens Water Technologies Corp.  
Literature No.: ST.055.830.000.IE.DS.0609  
Subject to change without prior notice.

Chemquill is a trademark of Siemens, its subsidiaries or affiliates.

The information provided in this literature contains merely general descriptions or characteristics of performance which in actual case of use do not always apply as described or which may change as a result of further development of the products. An obligation to provide the respective characteristics shall only exist if expressly agreed in the terms of the contract.