

Wallace & Tiernan[®] Liquid Chemical Feed Systems, Chemtube[®] PPS Models S5 & S10 Systems

The Chemtube[®] PPS Model S5 & S10 positive displacement peristaltic pump systems are designed to handle a wide variety of chemicals and liquids. Simple operation consists of two rotating rollers that gradually compress an elastomeric tube, forcing liquid just ahead of each roller. The tube snaps back to its original shape after the rollers pass, refilling with liquid for the next discharge revolution. The pumped liquid only comes in contact with the tube interior and the end fittings. These pumps eliminate typical performance issues associated with air-binding generally seen in hypochlorite installations.

System Features

- Self priming
- High suction lift capability
- Capacity upgrades available
- AC or DC speed control

Technical Data

Materials of Construction:

Pump Housing: Cast Iron

Rotor: Carbon Steel

Rollers: 304 SS

Mounting Frame: 304SS

Available Hose Material: Natural Isoprene, EPDM, Hypalon[®], Buna N (S10 only)

Side Cover: Acrylic

Connection & Insert Materials: 316SS, PVC, or Titanium

Connection Size: 1/2"

Leak Detector Switch Rating: 100 VA Max, 230 Volts, 2.5 amps

Operating Range: 20:1 with SCR Variable Speed Drive, 10:1 or 100:1 with inverter drive

Accessories: Pulsation Dampeners, Calibration Columns, Pressure Relief Valves

Power Supply: 115 /230 Volts Single Phase
230/460 Volts Three Phase

Fluid Temperature:

- -10 to 75°C (14 to 165° F) (Buna N Tube)
- -10 to 85°C (14 to 185° F) (Natural Isoprene Tube)
- -10 to 93°C (14 to 200° F) (EPDM Tube)
- -10 to 85°C (14 to 185° F) (Hypalon[®] Tube)

Key Benefits

- Efficient and smooth, roller technology eliminates the need for an oil bath in the pump housing
- Flexible control options-constant speed, VFD and SCR
- Simplified service and maintenance
- Ideal for multi-phase fluids and slurries
- Early detection of hose failure - leak detector mounted at lowest point of housing
- Unobstructed flow-through pumping

Max Discharge Pressure: 8 Bar (120 PSI)

Max Suction Lift: 8 m (28 ft)

Max Flooded Suction: 3 Bar (45 PSI)

Hose Size: 5mm or 10mm (ID)

Motor Hp: Up to 1/2 HP Induction

1/2 HP Inverter Duty

1/2 HP Variable Speed

Weight: 36 kgs (80 lbs)

Shipping Weight: 41 kgs (90 lbs)

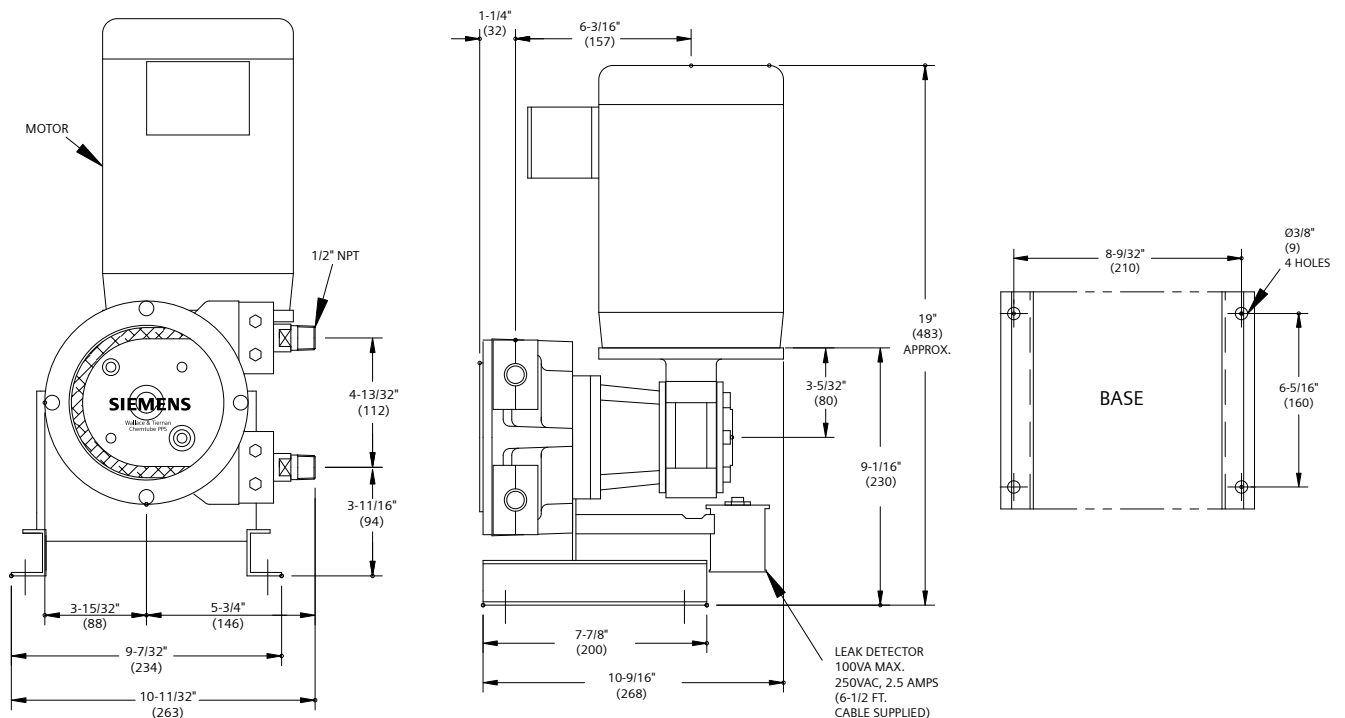


Speed control options, SCR or VFD

Product Sheet

S5 & S10 Fixed Speed Capacity Chart														
RPM	2 Bar (30 PSI)				4 Bar (60 PSI)				8 Bar (120 PSI)				HP Ind (Inv/SCR)	Duty Cycle
	S5		S10		S5		S10		S5		S10			
	LPH	GPH	LPH	GPH	LPH	GPH	LPH	GPH	LPH	GPH	LPH	GPH		
17.5	6.8	1.8	24.6	6.5	6.4	1.7	21	5.5	6	1.5	17	4.5	1/4 (1/2)	Continuous
25	9.8	2.6	35.9	9.5	9.5	2.5	32.2	8.5	8.3	2.2	26.5	7	1/4 (1/2)	
29	10.8	2.84	41	11	10.8	2.8	34	9	9.5	2.5	32.2	8.5	1/4 (1/2)	
38	14.6	3.9	53	14	14.3	3.8	49	13	12.8	3.4	43	11	1/2 (1/2)	Intermittent*
50	19.3	5.1	71	18.8	19	5	64	17	16.6	4.4	58.7	15.5	1/2 (1/2)	
62.5	24.2	6.4	88.9	23.5	23	6.3	83	22	21	5.6	73	19.5	1/2 (1/2)	
87.5	33.7	8.9	124	32.8	33	8.7	117.3	31	29.5	7.8	105	28	1/2 (1/2)	
125	-	-	174	47	-	-	165	44	-	-	150	40	1/2 (1/2)	

* Intermittent Duty: Max 1 hour running; Min. 1 hour off
 Note: An S5 pump can be upgraded to an S10 model



Notes: All dimensions in () are mm. See WT.490.200.100.UA.CN & WT.490.200.102.UA.CN for complete dimensions.

Siemens
 Water Technologies
 Germany
 +49 8221 9040
 wtger.water@siemens.com
 United Kingdom
 +44 1732 771777
 wtuk.water@siemens.com

USA
 +1 856 507 9000
 wtus.water@siemens.com

© 2008 Siemens Water Technologies Corp.
 Literature No.: WT.490.200.010.IE.PS.1208
 Subject to change without prior notice.

Chemtube and Wallace & Tiernan are trademarks of Siemens, its subsidiaries or affiliates. Hypalon is trademark of DuPont Performance Elastomers LLC.

The information provided in this literature contains merely general descriptions or characteristics of performance which in actual case of use do not always apply as described or which may change as a result of further development of the products. An obligation to provide the respective characteristics shall only exist if expressly agreed in the terms of the contract.