

# Wallace & Tiernan® Liquid Chemical Feed Systems Chemtube® PPS Model S16 System

The Chemtube® PPS Model S16 positive displacement peristaltic pump system is designed to handle a wide variety of chemicals and liquids. Simple operation consists of two rotating rollers that gradually compress an elastomeric tube, forcing liquid just ahead of each roller. The tube snaps back to its original shape after the rollers pass, refilling with liquid for the next discharge revolution. The pumped liquid only comes in contact with the tube interior and the end fittings.

## Features

- Compact footprint
- No seals
- High suction lift capability
- Self priming
- No valves to clog

## Technical Data

### Materials of Construction:

Pump Housing: Cast Iron  
Rotor: Carbon Steel  
Rollers: 304 SS  
Mounting Frame: 304SS  
Available Hose Material: Natural Isoprene, Buna N, EPDM, Hypalon®  
Side Cover: Acrylic  
Connection & Insert Materials: 316SS, PVC, or Titanium

**Connection Size:** 3/4" NPT

**Leak Detector Switch Rating:** 100 VA Max, 230 Volts, 2.5 amps

### Operating Range:

20 to 1 with SCR Variable Speed Drive  
10 to 1 or 100 to 1 with Inverter Drive

**Accessories:** Pulsation Dampeners, Calibration Columns, Pressure Relief Valves

**Power Supply:** 115 /230 Volts Single Phase, 230/460 Volts Three Phase

### Fluid Temperature:

- -10 to 74°C (14 to 165° F) (Buna N Tube )
- -10 to 85°C (14 to 185° F) (Natural Isoprene Tube)
- -10 to 93°C (14 to 200° F) (EPDM Tube)
- -10 to 85°C (14 to 185° F) (Hypalon® Tube)

## Key Benefits

- Efficient and smooth, roller technology eliminates the need for an oil bath in the pump housing
- Flexible control options-constant speed, VFD and SCR
- Simplified service and maintenance
- Ideal for multi-phase fluids and slurries
- Early detection of hose failure - leak detector mounted at lowest point of housing
- Unobstructed flow-through pumping

**Max Discharge Pressure:** 8 Bar (120 PSI)

**Max Suction Lift:** 8 m (28 ft.)

**Max Flooded Suction:** 3 Bar (45 PSI)

**Hose Size:** 16mm (ID)

**Motor Hp:** Up to 1/2 HP Induction  
1/2 HP Inverter or Variable Speed

**Weight:** 41 kgs (90 lbs)

**Shipping Weight:** 45kgs (100 lbs)

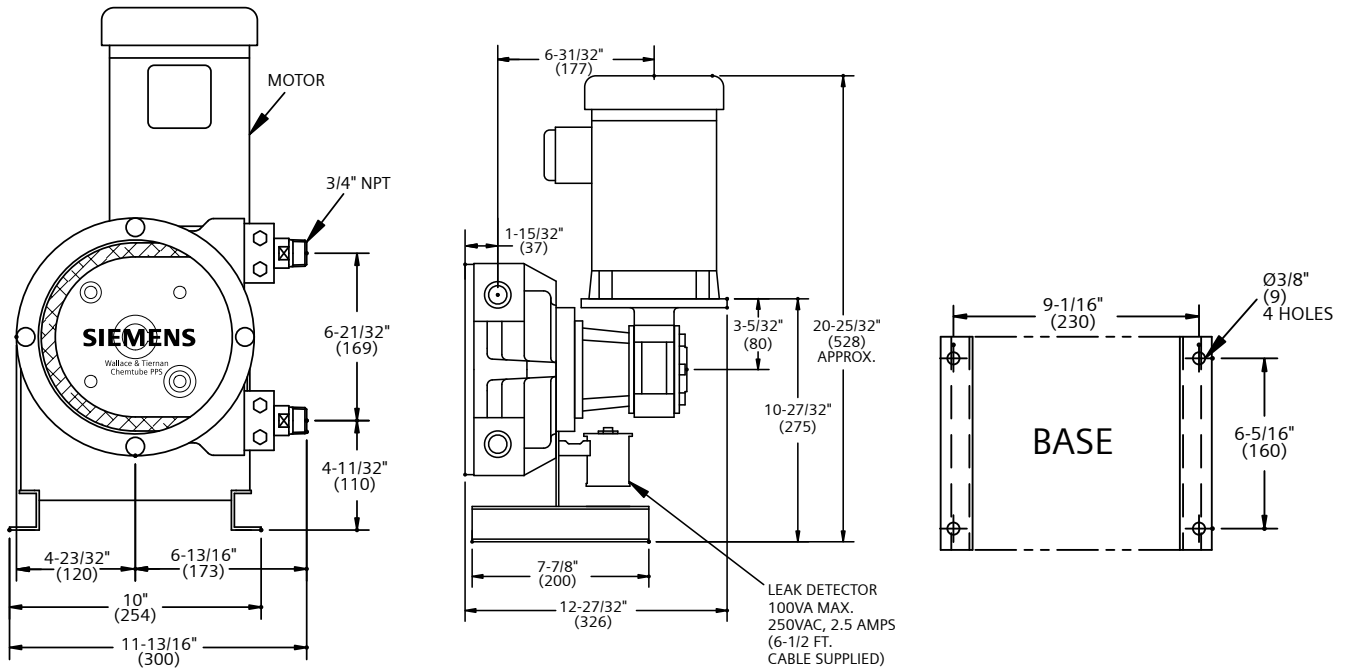


Speed control options,  
SCR or VFD

## Product Sheet

S16 Fixed Speed Capacity Chart								
RPM	2 Bar (30 PSI)		4 Bar (60 PSI)		8 Bar (120 PSI)		HP Ind (Inverter)	Duty Cycle
	LPH	GPH	LPH	GPH	LPH	GPH		
17.5	94	25	75	20	56	15	1/4 (1/2)	Continuous
25	135	36	116	31	94	25	1/4 (1/2)	
29	150	40	131	35	113	30	1/4 (1/2)	
38	199	53	173	46	15	40	1/2 (1/2)	Intermittent*
50	274	73	244	65	218	58	1/2 (1/2)	
62.5	338	90	311	83	281	75	1/2 (1/2)	
87.5	477	127	439	117	394	105	1/2 (1/2)	
125	675	180	638	170	582	155	1/2 (1/2)	

\* Intermittent Duty: Max 1 hour running; Min. 1 hour off



Notes: All dimensions in ( ) are mm. See WT.490.200.106.UA.CN for complete dimensions.

Siemens  
Water Technologies  
  
Germany  
+49 8221 9040  
wtger.water@siemens.com

United Kingdom  
+44 1732 771777  
wtuk.water@siemens.com

USA  
+1 856 507 9000  
wtus.water@siemens.com

© 2008 Siemens Water Technologies Corp.  
Literature No.: WT.490.200.016.IE.PS.1208  
Subject to change without prior notice.

Chemtube and Wallace & Tiernan are trademarks of Siemens, its subsidiaries or affiliates. Hypalon is trademark of DuPont Performance Elastomers LLC.

The information provided in this literature contains merely general descriptions or characteristics of performance which in actual case of use do not always apply as described or which may change as a result of further development of the products. An obligation to provide the respective characteristics shall only exist if expressly agreed in the terms of the contract.