

Wallace & Tiernan[®] Liquid Chemical Feed Systems Chemtube[®] PPS Model M40 System

The Chemtube[®] PPS Model M40 positive displacement peristaltic pump system is designed to handle a wide variety of chemicals and liquids. Simple operation consists of two rotating rollers that gradually compress as elastomeric tube, forcing liquid just ahead of each roller. The tube snaps back to its original shape after the rollers pass, refilling with liquid for the next discharge revolution. The pumped liquid only comes in contact with the tube interior and the end fittings.

Features

- Compact footprint
- No seals
- High suction lift capability
- Self priming
- No valves to clog
- Clear front cover

Technical Data

Materials of Construction:

Pump Housing: Cast Iron
Rotor: Carbon Steel
Rollers: Carbon Steel
Mounting Frame: Stainless Steel
Available Hose Material: Natural Isoprene, Buna N, EPDM, Hypalon[®]
Side Cover: Acrylic
Connection & Insert Materials: 316SS, PVC (max. B/P 6 Bar / 90 PSI), or Titanium

Connection Size: 1-1/2" ANSI 150 lb. Flange

Leak Detector Switch Rating:

100 VA Max, 230 Volts, 2.5 amps

Operating Range:

20 to 1 with SCR Variable Speed Drive
10 to 1 or 100 to 1 with Invertor Drive

Accessories: Pulsation Dampeners, Calibration Columns, Pressure Relief Valves

Power Supply:

115/230 Volts Single Phase
230/460 Volts Three Phase

Fluid Temperature:

- -10° to 74°C (14 to 165° F) (Buna N Tube)
- -10° to 85°C (14 to 185° F) (Natural Isoprene Tube)
- -10° to 93°C (14 to 200° F) (EPDM Tube)
- -10° to 85°C (14 to 185° F) (Hypalon[®] Tube)

Key Benefits

- Efficient and smooth, roller technology eliminates the need for an oil bath in the pump housing
- Flexible control options-constant speed, VFD and SCR
- Simplified service and maintenance
- Ideal for multi-phase fluids and slurries
- Early detection of hose failure - leak detector mounted at lowest point of housing
- Unobstructed flow-through pumping

Max Discharge Pressure: 8 Bar (120 PSI)

Max Suction Lift: 8m (28 ft.)

Max Flooded Suction: 3 Bar (45 PSI)

Hose Size: 40mm (ID)

Motor Hp: Up to 3 HP Induction
Up to 5 HP Inverter or Variable Speed

Weight: 249 kgs (550 lbs)

Shipping Weight: 272 kgs (600 lbs)

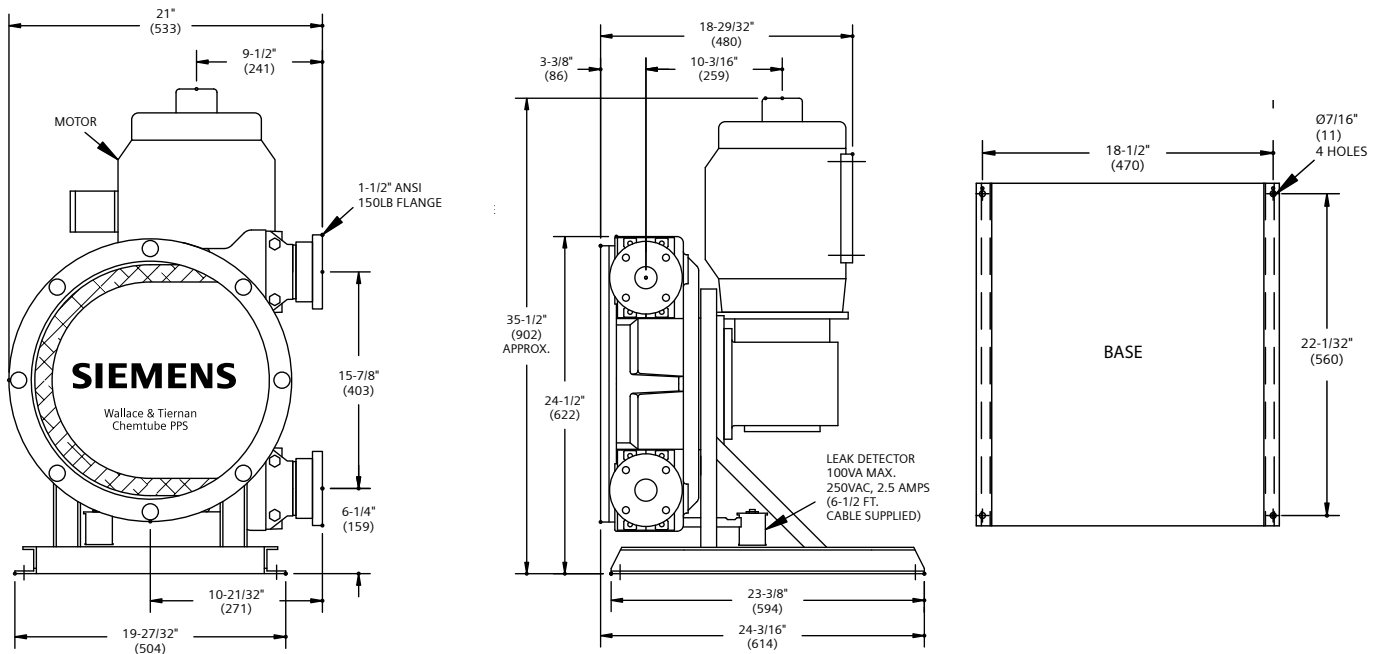


Product Sheet

M40 Fixed Speed Right-Angle Drive Gearbox - Up to 3 Bar (45 PSI) Max.						
RPM	Capacity		Back Pressure		HP IND (Inv)	Duty Cycle
	LPH	GPH	BAR	PSI		
17.5	1325	350	3	45	1 (1-1/2)	Continuous
22	1628	430	3	45	1 (1-1/2)	
27	2082	550	3	45	1 (1-1/2)	
31	2346	620	3	45	1 (2)	
38	2990	790	2	35	1 (2)	Intermittent*
44	3482	920	2	35	1 (2)	
58	4542	1200	2	35	1-1/2 (3)	
76	6056	1600	2	35	2 (3)	
87.5	6850	1810	1	20	2 (3)	
117	9084	2400	1	20	3 (5)	

M40 Fixed Speed Coaxial Gearbox - up to 8 bar (120 PSI) Max.						
RPM	Capacity		Back Pressure		HP IND (Inv)	Duty Cycle
	LPH	GPH	BAR	PSI		
13.2	379	100	8	120	1 (2)	Continuous
17	568	150	8	120	1 (2)	
22	1040	275	8	120	1 (2)	
27	1574	400	8	120	2 (2)	
32	1703	450	8	120	2 (2)	Intermittent*
39	2271	600	6	90	2 (2)	
47	2839	750	6	90	3 (3)	
56	4277	1130	4	60	3 (3)	
70	5299	1400	4	60	3 (3)	
88	6889	1820	3	45	3 (3)	
141	10,219	2700	3	45	3 (3)	

* Intermittent Duty: Max 1 hour running; Min. 1 hour off



Notes: All dimensions in () are mm. Dimensions shown are for right-angle drive gearbox. See WT.490.200.120.UA.CN for complete dimensions.

Siemens
Water Technologies

Germany
+49 8221 9040
wtger.water@siemens.com

United Kingdom
+44 1732 771777
wtuk.water@siemens.com

USA
+1 856 507 9000
wtus.water@siemens.com

© 2008 Siemens Water Technologies Corp.
Literature No.: WT.490.200.040.IE.PS.1208
Subject to change without prior notice.

Chemtube and Wallace & Tiernan are trademarks of Siemens, its subsidiaries or affiliates. Hypalon is trademark of DuPont Performance Elastomers LLC.

The information provided in this literature contains merely general descriptions or characteristics of performance which in actual case of use do not always apply as described or which may change as a result of further development of the products. An obligation to provide the respective characteristics shall only exist if expressly agreed in the terms of the contract.