

Wallace & Tiernan® Liquid Chemical Feed Systems Chemtube® PPS Model M55 System

The Chemtube® PPS Model M55 positive displacement peristaltic pump system is designed to handle a wide variety of chemicals and liquids. Simple operation consists of two rotating rollers that gradually compress an elastomeric tube, forcing liquid just ahead of each roller. The tube snaps back to its original shape after the rollers pass, refilling with liquid for the next discharge revolution. The pumped liquid only comes in contact with the tube interior and the end fittings.

Features

- Compact footprint
- No seals
- High suction lift capability
- Self priming
- No valves to clog

Technical Data

Materials of Construction:

Pump Housing: Cast Iron

Rotor: Carbon Steel

Rollers: Cast Iron

Mounting Frame: Painted Carbon Steel

Available Hose Material: Natural Isoprene, Buna N, EPDM, Hypalon®

Side Cover: Acrylic

Connection & Insert Materials: 316SS, PVC (max. B/P 6 Bar / 90 PSI), or Titanium

Connection Size: 2" ANSI 150-lb Flange

Leak Detector Switch Rating:

100 VA Max, 230 Volts, 2.5 amps

Operating Range:

20:1 with SCR Variable Speed Drive

10 to 1 or 100 to 1 with Inverter Drive

Accessories: Pulsation Dampeners, Calibration Columns, Pressure Relief Valves

Power Supply: 230/460 Volts, Three Phase

Fluid Temperature:

- -10 to 74°C (4 to 165° F) (Buna N Tube)
- -10 to 85°C (14 to 185° F) (Natural Isoprene Tube)
- -10 to 93°C (14 to 200° F) (EPDM Tube)
- -10 to 85°C (14 to 185° F) (Hypalon® Tube)

Key Benefits

- Efficient and smooth, roller technology eliminates the need for an oil bath in the pump housing
- Flexible control options-constant speed, VFD and SCR
- Simplified service and maintenance
- Ideal for multi-phase fluids and slurries
- Early detection of hose failure - leak detector mounted at lowest point of housing
- Unobstructed flow-through pumping

Max Discharge Pressure: 8 Bar (120 PSI)

Max Suction Lift: 8 m (28 ft.)

Max Flooded Suction: 2.5 Bar (37 PSI)

Hose Size: 55mm (ID)

Motor Hp:

- Up to 7-1/2 HP Induction
- Up to 10 HP Inverter or Variable Speed

Weight: 315 kgs (695 lbs)

Shipping Weight: 340 kgs (750 lbs)

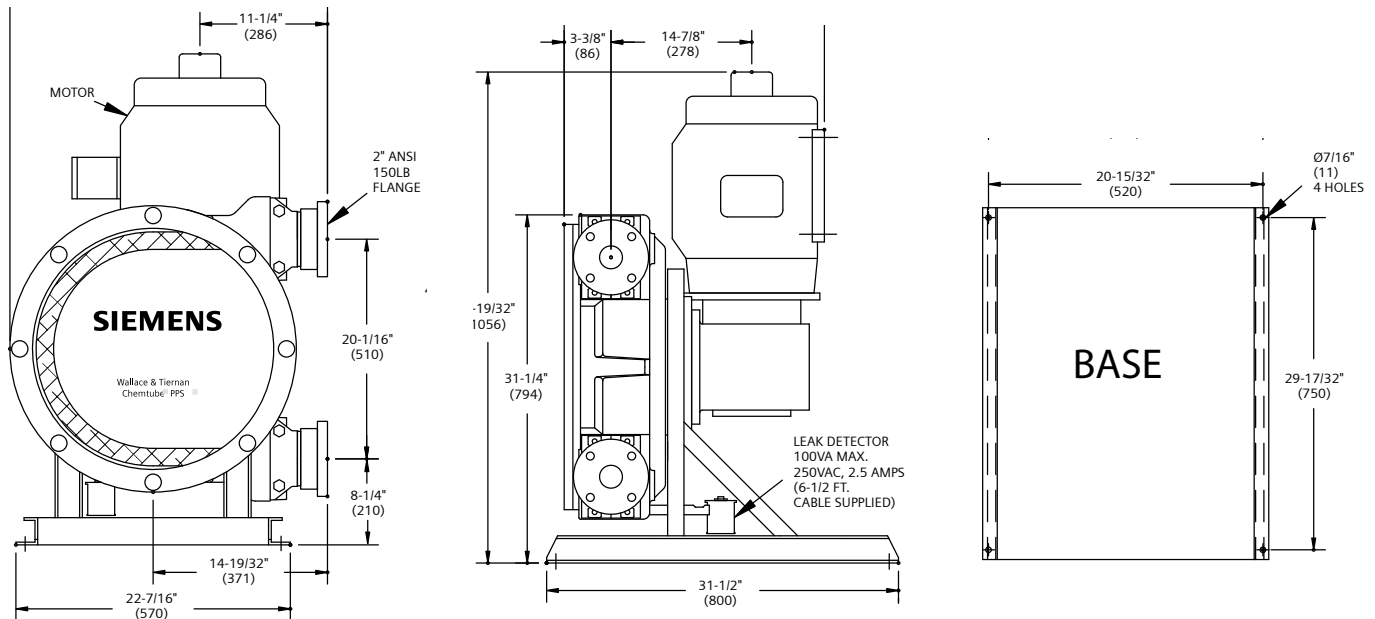


Product Sheet

M55 Fixed Speed Right-Angle Drive Gearbox Up to 3 Bar (45 PSI) Max.						
RPM	Capacity		Back Pressure		HP Ind (Inv)	Duty Cycle
	LPH	GPH	BAR	PSI		
17.5	3028	800	3	45	1-1/2 (2)	Continuous
22	3785	1000	3	45	1-1/2 (2)	
27	4769	1260	3	45	2 (2)	
31	5678	1500	2.3	35	2 (2)	
38	7192	1900	2.3	35	2 (2)	Intermittent*
44	8516	2250	2.3	35	3 (3)	
58	10977	2900	2.3	35	3 (3)	
76	14383	3800	2.3	35	5 (5)	
87.5	16654	4400	1.3	20	5 (5)	
117	21575	5700	1.3	20	5 (5)	

M55 Fixed Speed Coaxial Gearbox - up to 8 Bar (120 PSI Max.)						
RPM	Capacity		Back Pressure		HP Ind (Inv)	Duty Cycle
	LPH	GPH	BAR	PSI		
14	984	260	8	120	2 (3)	Continuous
17	1854	490			3 (3)	
22	2176	575			3 (3)	
27	3217	850			5 (5)	
32	4163	1100	8	120	5 (5)	Intermittent*
46	6623	1750	6.7	100	5 (5)	
57	8516	2250	5	75	5 (5)	
70	10787	2850			7-1/2 (10)	
90	14193	3750			7-1/2 (10)	

* Intermittent Duty: Max 1 hour running; Min. 1 hour off



Notes: All dimensions in () are mm. Dimensions shown are for right-angle drive gearbox. See WT.490.200.122.UA.CN for complete dimensions.

Siemens
Water Technologies

Germany
+49 8221 9040
wtger.water@siemens.com

United Kingdom
+44 1732 771777
wtuk.water@siemens.com

USA
+1 856 507 9000
wtus.water@siemens.com

© 2008 Siemens Water Technologies Corp.
Literature No.: WT.490.200.055.IE.PS.1208
Subject to change without prior notice.

Chemtube and Wallace & Tiernan are trademarks of Siemens, its subsidiaries or affiliates. Hypalon is trademark of DuPont Performance Elastomers LLC.

The information provided in this literature contains merely general descriptions or characteristics of performance which in actual case of use do not always apply as described or which may change as a result of further development of the products. An obligation to provide the respective characteristics shall only exist if expressly agreed in the terms of the contract.